



# The Mountain GAZETTE

© 2024, Train Mountain

An Official Publication of the Train Mountain Institute and TM Railroad—Issue Vol. #5 Issue #20 **March 2024**

## March

Hello everyone,

Some exciting news this month. Have you ever thought about living close to Train Mountain? How about living *at* Train Mountain? Well, now you have a once in a lifetime chance. We're just bummed that we're not old enough to retire here, plus our husband/father wouldn't agree. Sigh...

In other news, Train Mountain is getting another train! What kind of train? Not the kind of train you might be expecting. Read the article and find out.

Dale Furseth has a good and sobering article on memorial ties, as well as a dramatic tale of improvement to meet badge production. We also have articles on the Ops Meet, Joyce as usual, a TMRR bylaws change, and some other cool stuff.

Now that we're getting close to season, we're running a reminder of the TM dog policy. Please, folks, be reasonable with your pets. We know they're like a furry family member to you, but we expect our kids to behave well and we clean up after them; do the same for your dogs.

As always, kick back, chill out and have a read.

Cheers,

Lucinda Gilman and Xander Geraghty

Lucindagilman@gmail.com

### 2024 Train Mountain Train Meet Schedule

	Polar Bear	Spring Awakening	Narrow Gauge	Ops Meet	Summer Meet	Big Build	Fall Colors
Work week		4/27-5/2	5/25-5/30	6/22-6/26	7/27-8/1	8/31-9/5	
Meet	1/13-1/15	5/3-5/5	5/31-6/2	6/27-6/30	8/2-8/4	9/6-9/8	10/4-10/7

### Join Train Mountain Now!

Register or Join - [https://trainmtn.org/tmrrmembers/Member\\_Portal.aspx](https://trainmtn.org/tmrrmembers/Member_Portal.aspx)  
The Mountain Gazette

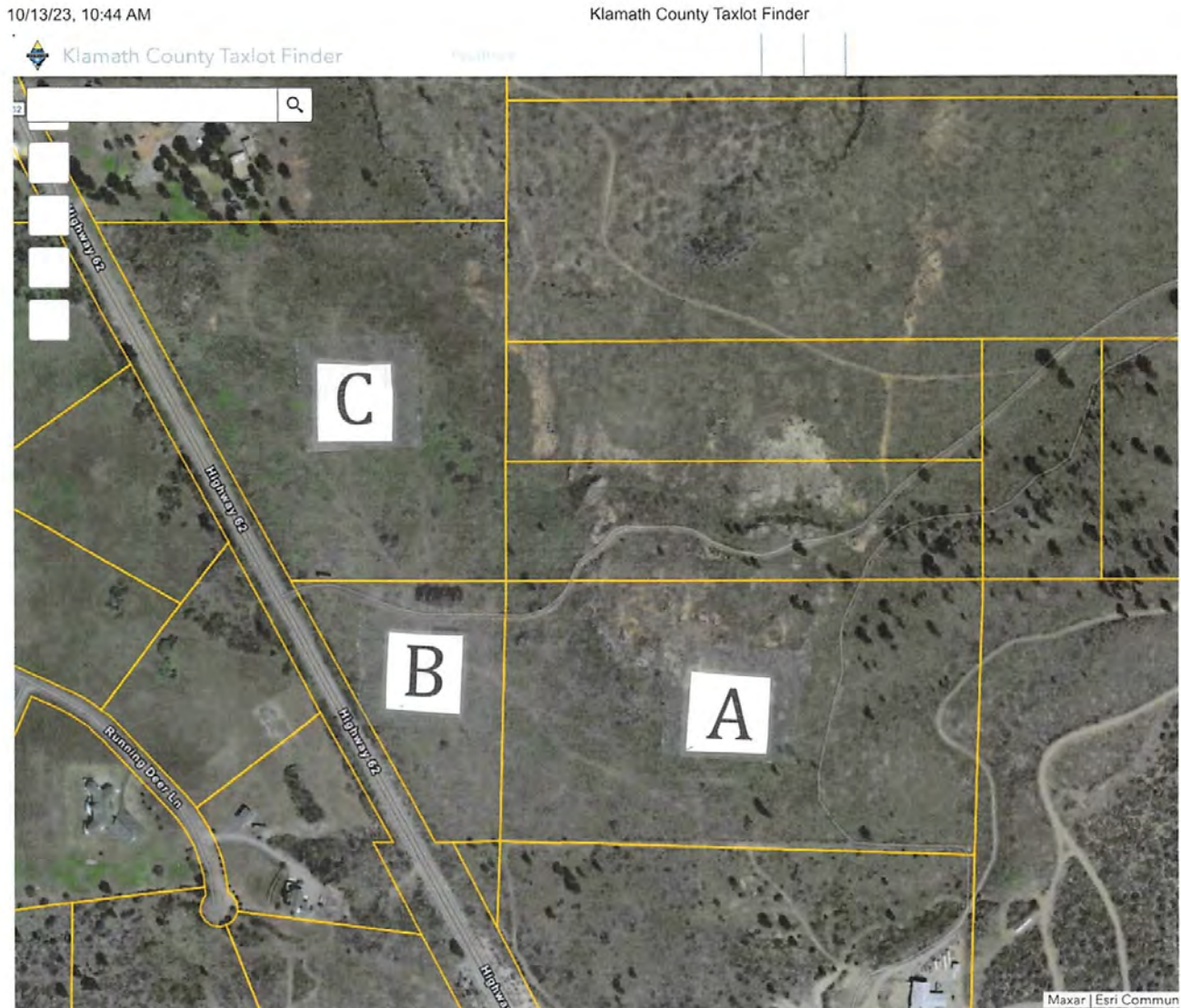
Page:1

March 2024

# Train Mountain Selling Property

Jerry Crane

Train Mountain (TM) is selling three property lots to members. These lots are undeveloped, attached to TM and are located north of the Dobbs property next to Highway 62. Klamath County has designations that a home can be built on each property.



TM will be selling these properties through a direct sale. There will be no outside agents involved in the sale. The sale will be conducted by taking email offers from all those interested on each property on a designated date. The best offer on each property will then be posted for each property. A second round of offers will then be taken. Anyone can then drop out of consideration at that time or they can make an increased offer. This procedure will continue until no new offers are received. The individual with the highest offer will then be sold the property at the price of their last offer. TM



reserves the right to reject any or all offers.

There is track running from TM's main track to the top of property "A". This is the loop as seen on the map on the east end of that property. Access to the TM main line will be allowed at this point. Any track access from properties "B" and "C" will require an easement across property "A".

Jerry Crane will be conducting tours of the properties during the Spring Awakening and Narrow Gauge meets. He will be providing more details on the properties at that time. The date for the first round of offers will be set at that time.

To learn more about each property please visit the Klamath County Tax Assessor's [web tax lot finder map](#) and enter the Klamath County property ID number into the search window. Left click on the property for extended information on each property.

The Klamath County Assessor's property ID numbers are:

- "A" – 218954
- "B" – 872045
- "C" – 872044.

If you're interested, please find Jerry at one of those meets and/or email [info@tmrr.org](mailto:info@tmrr.org).

*A brave soul out riding in the blustery weather*



# Quentin Breen's Dream

Frank Bartholomew

There are a few of us still left who knew and talked with Quentin. He was a model railroad visionary. Who else would buy over 2000 acres for a 1/8<sup>th</sup> inch scale railroad? Now, with 37 miles of track, a lot of scale and full-size buildings and equipment, look what we have to enjoy.

When Quentin started buying older and historic prototype railroad equipment, cars and cabooses, it became evident his vision stretched much beyond 1/8<sup>th</sup> inch scale. He did set aside space to include G-Scale, but only one acre. After Quentin's collection of prototype cars grew to over 50 pieces, the Museum part of Train Mountain became a significant part of the visitor experience. Two Cabooses, the Rotary Snowplow and Wine Car at the entrance are a great introduction!

Locally, the BNSF and SP (now UP) yards have been great sources of real prototype RR stuff. Thanks to the efforts of many members and largely spearheaded by Steve Panzik, we have a wonderful collection. This includes a Weyerhaeuser Timber Company consist of a water tank car, three log bunkers, and a caboose sitting in 6-Acre campground, but no locomotive. Due to many difficulties, availability, complexity and cost, TM has not a single engine on the entire 2200-plus acre site. This is about to change.

**A Baldwin switcher locomotive will arrive at TM soon!** Weyerhaeuser Weyco #101, a 100 ton, 750 hp, diesel-electric locomotive built in 1951 and solely used in the Klamath basin, is on its way. This is a DS-4-4-750, a pre-cursor to the follow-on S8 by Baldwin, also purchased by Weyerhaeuser. It was designed for moving logs and finished lumber.

This project is being driven by a committee of three Model Railroaders: Frank Bartholomew - Train Foamer and Philanthropist; Steve Panzik - RR Engineer and Collector; David Waterstreet - Pilot, Engineer, and Organizer. We appreciate the support and approval of the TMI Board of Directors. We've gotten real and significant cooperation and assistance from Oregon State Parks, Klamath Division; Collier State Park; and the Oregon Coast Scenic Railroad. Others will be involved as needed for specific tasks. We do not yet know the exact date when this project will get underway, but expect late spring or early summer 2024. This will largely be up to the weather (dry grounds are a must); we also have to coordinate multiple pre-move activities, including heavy hauler schedules, locomotive environmental cleaning, and repainting.



This locomotive will be placed in Six Acres, leading the in-place Weyerhaeuser consist. The picture here shows it is as it exists today.

We will let everyone know as things develop; we're hoping to include 7 Idea Productions to video record this momentous event. Stay tuned!



# Train Mountain Memorial

By Dale Furseth

One of the jobs I do as a volunteer at Train Mountain is to engrave ties with the names of members who have passed. These engraved ties are placed in the Train Mountain Memorial Track to serve as a reminder of the many men and women that worked so hard to make Train Mountain a world-class destination. To honor the individuals, I work to get the tie engraved and placed as quickly as possible - they deserve to be remembered - even if that means clearing a little snow.

It is not my place here to give names, but instead I ask that you, as members, take a few minutes out of your day at Train Mountain, walk the memorial track, read the names and say thank you for all they did.

The memorial ties are in front of the Flag Pole. If you have trouble finding them, ask! It is important to remember and honor.



## What's spinning on the turntable?

Johnny Cash

[Like the 309](#)

One of the very last songs Cash recorded, Like the 309 is a wry, slightly macabre look at Cash's approaching death. He knows it's coming; he accepts this; but he wants to meet it on his own terms, howling at the night.



# Train Mountain 2024 Operations Meet

**Richard Croll, Train Master**

Time flies when you are having fun and here it is March already. It is time to start planning to attend this year's Train Mountain Operations Meet.

The work week will begin Saturday, June 22<sup>nd</sup>. Most of the set-up activity will take place on Sunday and Monday, with the operations beginning on Tuesday, June 25<sup>th</sup>. if all goes as planned.

Since we will be changing to the Train Game, or Rail Ops as it is now called, it will be necessary for each crew to have at least one member registered in the Train Game site. It is very easy to do. You simply go to the TMRR website and select TM Train Game on the left column. That will take you to the Rail Ops site and the register button at the top. Just fill in the blanks.

The Passenger side of the Ops meet will be mostly unchanged except for a couple of additional stations. If you have never done the passenger runs, I highly recommend it. I finally got a chance to do a couple of runs at the Maricopa Live Steamers Winterfest this year, and it was challenging as well as a lot of fun.

I expect the freight part of the Operations Meet to be a different experience this year. A lot of it will be familiar to those who have participated in the past, but we expect more flexibility with the new system. Most of the new system will be very familiar to those who have been doing the Train Game. One of the big changes I expect to see is more car movement with the new system. That will be due to changes in how the routes are set up, as well as having the computer handle a lot of what had to be done manually in the freight office. That will mean cars can be reassigned much faster after being delivered.

The Operations Meet is a very popular event at Train Mountain, and I encourage members who have not tried it in the past to give it a go this year. As always, there will be plenty of opportunities to see your old friends and meet new ones. There will be a banquet on Saturday evening.



I always welcome any comments or suggestions. Please send them to me at [rcroll@tmrr.org](mailto:rcroll@tmrr.org).



## Greetings from Joyce at the front office:

I have been out of town for a bit so have been missing out on the latest happenings at Train Mountain.

From the weather reports I am seeing it looks like Train Mountain is getting a mix of weather—sunny skies, snow, rain, chilly mornings, less chilly mornings and slightly warmer days.

One of our long-time members, Bill Kludt, passed away recently. He and his wife, Joyce, were very dedicated to keeping the miniature buildings in pristine condition, bringing them into the carpentry shop as needed, restoring them and giving them fresh coats of paint and fresh faces. Bill will be missed. Our condolences go out to his wife, family and friends.

Membership renewals and new memberships are continuing to roll in. We are currently at 243 memberships and 428 members so far for 2024.

Thank you to everyone who has already joined or renewed for the 2024 year! If you haven't renewed yet or you want to join, you can do so online, by mail or through the business office.

Kitsap work week will be coming up in April. It will be so great to see more people at Train Mountain this coming Spring.

Happy St Patrick's Day!

Have a great month!

*A brave soul out railbiking in the blustery weather*



# Meet Badges

Dale Furseth

Meet badges are an important part of the Train Mountain Meet experience. Not only do your colorful meet badges act as an introduction (how many times have you squinted to see someone's name on their badge?) and give you instant access to emergency phone numbers (you have looked at the back of your badge before, right?), but they also serve as an important wall decoration when you get back home. I have a bulletin board in my office that proudly displays previous meet badges - each one brings back memories of the trains I saw and people I talked to.

But creating meet badges is a complicated process. Periodically, the office staff has to extract the list of members who have signed up for the meet, sort thru the list and make a list of those members who need printed badges. The list is merged and tweaked and eventually a colorful meet badge is printed, ready for pickup on your arrival. Creating the badges is a lot of work and takes a lot of volunteer time. For those who opt to sign up for the meet on their arrival, getting a printed badge can be a real problem causing a lot of frustration and delays, because the volunteers may not be available. You remember the people doing most of the work are unpaid volunteers, right?? I decided to try and solve this problem.

Starting now, when a member signs up online for a meet, some magical things happen and their badge gets automatically printed in the Train Mountain office, and is waiting for pickup when they arrive. So if you want a badge, you can now make that happen by signing up for the meet online.

But wait, you say. I don't have a computer! The plan is to have a computer on the Train Mountain office counter where, surrounded by helpful people, you can enter your name and a little bit of other information, and within a few minutes, your work will magically print out your very own badge! Automating this process will save a huge amount of time for the office staff, and will ensure that everyone who wants a badge can have one in a timely manner.



And for those who have already signed up for meets, all those meet registrations will automatically be printed and waiting on your arrival. Here is what your badges will look like!

Thanks.



# Review of the Dog policy at Train Mountain

## Jeff Mills-TMI Board Member

I have received complaints from members regarding the dog policy not being followed. Bringing your dog to Train Mountain is a privilege and you can be asked to remove your dog from the property. This policy is in effect to provide safety for all members and for the dogs themselves. If people continue to disregard the Dog Policy, we will be required to take action to ensure compliance.

Cheryl McInnes made a generous donation to create a secure Dog Park where dogs can be let loose. However, **they must be monitored by a human**. Dogs are not to be left unattended.

The following is taken directly from the TM Website and can be found under the heading of Train Mountain Documents. If you have any questions about this policy, please contact me or another TMI or TMRR Board Member.

## Train Mountain Dog Policy

Nice dogs are allowed on Train Mountain property, problem dogs are not.

1. Problem Dogs may be banned from the property by agreement of both TMRR and TMI.
2. Dogs must be on a leash except when they are secured in a railcar.
3. Dog owners must pick up their dog's poop and dispose of it properly.
4. Dogs must behave in a quiet and orderly manner. Those who frequently bark or yap will be banned from the property.
5. Only Service Dogs will be allowed in Central Station or any of the following areas: Living Quarters not on long term lease, areas where food is processed, meeting areas, or office spaces.

# Train Mountain Railroad By-Laws Change

The TMRR Board of Directors voted on February 14<sup>th</sup> to make a minor alteration to the By-Laws. In the past two years the Board has experienced vacancies twice – when David Waterstreet and Jeff Mills each vacated their positions to accept a position on the TMI Board. These vacancies were filled by the appointments of Clay Smith and Lindsay Eddy.

At issue is when appointed Directors should face re-election and how that might affect the stagger of Directors' terms. The board opted to alter the By-Laws to indicate that an appointed Director will complete the term of the vacating Director so that the stagger terms never changes. With this arrangement, there will always be at least two and never more than three Directors' terms ending in any year.

The current stagger of terms is:

<u>Director</u>	<u>Term Ends</u>
Richard Croll	2024
Pete Robbins	2024
Richard Miller	2025
Ed Sarber	2025
Clay Smith	2025
John Cooper	2026
Lindsay Eddy	2026

Another consideration was the issue of term limits. The By-Laws indicate that elected Directors are limited to three terms of three years each, but did not indicate what the limits should be when a Director is appointed to a partial term. Similar to how the President of the United States is limited to 2 ½ terms in the event they assume office, the Board chose to allow a Director to serve a maximum of 3 ½ terms in the event they are initially appointed to office.

The Board also changed the language concerning how the size of the board is expanded. If the size is increased, additional board members now cannot be appointed; they must be elected. The Board has no plans to expand in size.

Below are the textual changes to the By-Law. Added text is in red, deleted text is in strike-out, unchanged text is in black.

#### Article III.

Section 3. Number of Directors. The Board of Directors will consist of no fewer than three and no more than nine members. The specific number of directors within this range must be set and may be changed by resolutions of the Board of Directors. ~~The current number is 7. The Board may in this way increase the size of the Board and then may elect new directors to fill the newly created director positions.~~ **Additional directors will be nominated and voted on per Section 5. Directors.**

Section 6. Filling Vacancies. The Board of Directors may ~~elect new directors to fill any vacancies on the Board, including vacancies created by the passage of a resolution increasing the total number of Board member positions. A Director elected to fill a vacancy will serve only until the next regular election of directors, at which time she or he must be elected by the voting membership in order to remain a director~~ **appoint a new director to fill a vacancy resulting from any reason except increasing the number of directors. The new director will serve the term remaining of the vacating director. Vacancies created by the passage of a resolution increasing the number of directors will be filled according to the procedures in Section 5. Directors**

Section 5: B) No Director will serve for more than three successive terms, except that the Board may vote to authorize the Treasurer to serve more than three successive terms. **If appointed to a vacancy prior to winning terms via election, a Director may not serve more than ten and one-half successive years. I.e, if a Director is appointed to a vacancy with more than half of that term remaining, the Director may not seek successive terms through election more than twice.**



# Spreading the Word

Marianna Sauser

Last August a small group of Train Mountain members participated in a Third Thursday Downtown Festival in Klamath Falls on Main St. to increase interest in and awareness of Train Mountain. We set up our pop-up booth with an engine, brochures and a video. We had a great time sharing information about Train Mountain with all the attendees that stopped by. We had many people interested in visiting and re-visiting Train Mountain – many came when they were children. It was a successful evening and we all felt it should be continued – so we are planning to participate in all 3 events this year – June, July and August. We would like to encourage any other TM members that may be at Train Mountain during these dates to help with the event. Volunteers are always needed! The dates are June 20, July 18, and August 15. All are Thursday evenings, usually from 5-9 pm.

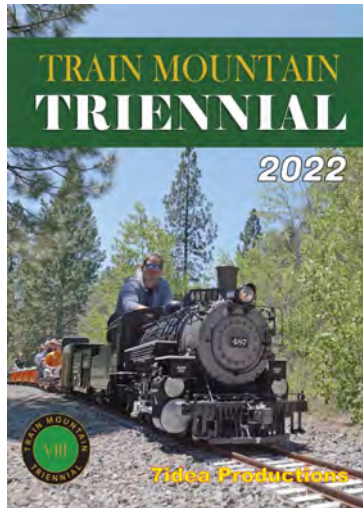
Please text/call me if interested at 916-531-8543; we'll put more details in upcoming Gazette issues. Thank you and looking forward to seeing all your smiling faces soon!



# CLASSIFIEDS

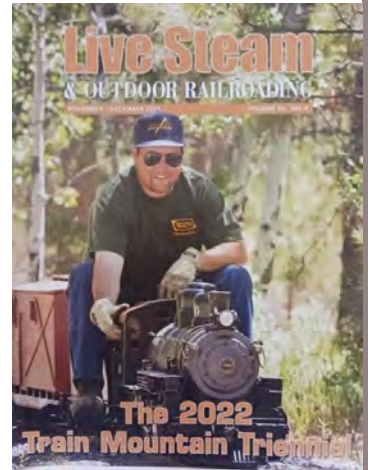
## 2022 Triennial Video Now Available

The 2022 Train Mountain Triennial video from Aaron Benson at 7Idea Productions is now available. You can [order online](#) or call the office at 541-783-3030 to get your copy. This is a most enjoyable video created by a true video artist and of course it just happens to be about our most favorite subject! The cost of the video is just \$29.95, quite a bargain! Videos of past Triennials are also available.



Our good friend Jim over at Discover Live Steam has placed ads for us on his terrific website, thanks Jim. [discoverlivesteam.com](http://discoverlivesteam.com)

Did you see the great article and front cover story from the March / March 2024 issue of Live Steam and Outdoor Railroading? It is a great article covering the 2022 Triennial, and about the great gang of folks that volunteer at Train Mountain and put on terrific live steam train meets. Pretty cool!



## Crater Lake/ Train Mountain Vacation Rentals

### Crater Lake Chalet

Located on Hwy 422, only 1 mile off Hwy 62 and 2 miles from Hwy 97 in the Chiloquin area. This house is at north end of Train Mountain and contiguous to Train Mountain.



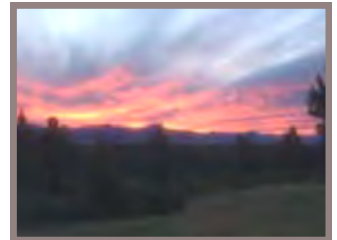
This comfortable house sits on 35 beautiful acres. 2 bedrooms and 2 bathrooms. Can sleep up to 6 people.

### Panoramic View Ranch House / Crater Lake

This ranch house is located on Hwy 62, and attaches to the west side of Train Mountain. The 56 acres, panoramic views of Agency Lake and



the Cascades. Enjoy a peaceful and private experience. 4 bedrooms and 2 bathrooms. Can sleep up to 8 people.



For more information please call: **Julie 415-756-3943** or **Mike 415-420-9026**  
**10% off for train mountain members**



# CLASSIFIEDS

## The Potbelly cafe



Located only 1.5 miles off Hwy 97 in Downtown Chiloquin in the same building as the Post Office 212 1st Ave-



**Good Service**  
**Good Food**  
**Friendly Folks**



## Crater Lake Junction Travel Center

34005 Hwy 97 N, Chiloquin, OR 97624, 541-783-9800

The Crater Lake Junction Travel Center opened for business in 2010, and is owned by the Klamath, Modoc and Yahooskin Tribes. Open 24 hours a day and located just next door to Kla-Mo-Ya Casino as you enter, this travel center offers competitive fuel prices and many convenience items.

Travelers can fuel up with gas, diesel, or propane. Stop in for a snack or soda, or grab a quick meal featuring food to go or you can eat it there, Free Wi-Fi, a comfortable lounge with large screen TVs, laundry and shower facilities, and ATMs are all available.

**WE ARE ALL VOLUNTEERS**  
**DON'T YELL AT ME, I AM A VOLUNTEER!**

**HAVE SOMETHING YOU WANT TO SELL?**

Place an ad in the Gazette!

1/8 Page: \$25/month or \$250/year

1/4 Page: \$40/month or \$400/year

1/2 Page: \$70/month or \$700/year

Full Page: \$125/month or \$1250/year

Published by Train Mountain Railroad

P.O. Box 438

Chiloquin, OR 97624

Email: [info.at.tmrr@gmail.com](mailto:info.at.tmrr@gmail.com) Phone: 541-783-3030

Contributors: TMRR BOD, Friends, TMI

Photos: Tom Watson



**Please submit your volunteer hours. If you work off site or at home on Train Mountain projects - these hours count.**



**REMEMBER: No job is complete without the paperwork!**





# NOTICES

## **Gazette PUBLICATION DEADLINE:**

Submissions to the Gazette must be received by the 15th of the month of publication. The fifteenth of the month is to be the last day to submit material. Material received after the 15th of the month may be held until the following month or rejected.

### **SUBMISSION CRITERIA**

Articles and ads may be submitted via a pdf file, MS WORD, Open Office, notepad, or similar text file attached to an email. **The email SUBJECT line must include your article title and a date.**

**Please give each article a distinct file name with your name and a date.** If everyone submits an article named "article for gazette" or something similar it will often get overwritten by another article with the same name when downloading. **Articles sent as text in a email text will no longer be accepted.**

Please use ARIAL 12pt font—it can be displayed in all Browsers, and is easy to read. Please do NOT use the Calibri or Times New Roman font, as we must take the time to convert it to Arial.

If your document has an embedded image, you must also include the image separately as a jpg, png, or similar image file.

Please send all articles to [lucindagilman@gmail.com](mailto:lucindagilman@gmail.com).

## **Visitors to Train Mountain and YOU:**

Train Mountain is very popular and is continually attracting visitors from throughout the world. We announce that our hours are from 9:00 AM until 3:00 PM Monday through Friday during the summer, and 10:00 AM to 2:00 PM during the winter. The office is closed on weekends except during meets, and then only when volunteers are available to open the office.

Our insurance advisors request that all people (members and visitors) complete and sign a liability release. If **YOU** as a member encounter visitors on the property without a visitors pass please direct them to the office so that we can insure that a release has been completed and a visitors pass has been issued.

If **YOU**, as a member, open the gate and allow visitors to pass through - **YOU** are responsible to see that the release has been completed, and **YOU** are liable for them until they sign a release. Releases are available in the mailboxes near the office for those times when the office is closed. There are also releases available in the kitchen and in the Back Shop.

***If you do not want to, or do not have the time to, ensure that the releases are completed -*** then please graciously explain that the train park is closed to visitors and that the open hours are normally (Winter - 10:00 AM until 2:00 PM) (Summer - 9:00 AM until 3:00 PM) Monday through

## **Train Mountain is a NO SMOKING Facility**

During recent events, many Members and their Guests have been ignoring this policy. There are only three designated smoking areas at Train Mountain:

- (1) Outside the front of the Backshop
- (2) Outside the east door of the Hall of Flags
- (3) Outside the Motor Pool (Maintenance Building)

Due to the high fire danger at Train Mountain during the summer, we have zero tolerance for anyone smoking outside one of the designated areas.

**There is NO SMOKING anywhere out on the track!**

Members, Guests, and Visitors that continue to violate the Train Mountain Smoking Policy may be asked to leave.

I've heard of that social media thing...

If you want to get Train Mountain information and pictures while you're waiting for the next gazette, follow and like us on these social media platforms:



**YouTube**

Facebook: [/trainmountainrailroad](https://www.facebook.com/trainmountainrailroad)

Instagram: [trainmountainrailroad](https://www.instagram.com/trainmountainrailroad)

Youtube: [trainmountainrailroad](https://www.youtube.com/trainmountainrailroad)

## **New Gate Code**

Due to security concerns, the Gate Code for the Train Mountain Main Gate may be changed at any time without notice. Any Member planning to arrive at Train Mountain when the Office is closed will need to contact the Office prior to arrival to ensure they have the current Gate Code.

**Get New Gate Code—Call Office 541-783-3030**



## Train Mountain Volunteer Hours

Name: \_\_\_\_\_

Month & Year: \_\_\_\_\_

[illegible]

## Volunteer Hours Reporting

Dale Furseth has worked his techie magic on the member's part of our website again. You can now report your monthly volunteer hours online. From the Train Mountain Railroad home page, click on "Online Member Resources: Join Train Mountain: "Register for Meets", then on "Enter Volunteer Hours" or go there directly with this link:

[https://trainmtn.org/tmrrmembers/Member\\_VolunteerHours.aspx](https://trainmtn.org/tmrrmembers/Member_VolunteerHours.aspx)

Choose your name from the drop down menu, enter your total hours in the box that matches the month you are reporting your hours for and click on “Update Information” to submit them. So-o-o simple! We hope you enjoy using this feature.