



The Mountain GAZETTE

©Copyright 2009, Train Mountain Railroad Museum

An Official Members Only Publication of the Train Mountain Railroad Museum Issue: #89 December 2009

Dear members,

Thank you again for the many cards and notes of cheer and comfort. It is so nice to think of each of you as you are thinking of us. We at Train Mountain continue to look forward to the events already planned for the year. Now, here is another date to consider.

A memorial event for Quentin, will take place on Sunday, May 24th, 2009, starting at 3:30 P.M. at Train Mountain. Refreshments will follow. All Train Mountain members that can attend are welcome. There will be a recording made of the memorial speakers so that a CD will be available soon for those who wish to have one.

We would like to make some posters of remembrances from you, the members, to display that day. I know it is hard to keep the writing short, but the more concise notes will be used. We will also try to arrange contributed photos.

There is space near the flagpole to be used for Quentin's Memorial Garden, and any contributions that are made to the Save The Rotary Snowplow fund will also be noted as Memorial Gifts. Thank you for asking.

Further announcement of plans will be made as they form. Kindly let Train Mountain know by May 1st if you plan to attend.

Very appreciatively, Sharon.

OK here is another of my 'goods news—bad news' stories. The good news is that I have NOT had to shovel any snow for two weeks! The bad news is that NOBODY here has had to shovel ANY snow for two weeks. What that means is that we had to cancel the Polar Bear Meet. That does not mean there will be no more snow this year. It just means that it will come at some other time! *Phooey!*

The many projects that are getting done during the winter months cover a large variety of needed areas. As you know we are expanding the track at Train Mountain, but along with that expansion comes the need for additional items. Items like, milepost markers (50 to the mile), switch stands, switch parts, and of course lots of track panels! Some of these projects are being done by staffers and others are being done by volunteers. When we get back to laying track, the supplies will be available, good job folks. By the way, John Black gave me the latest statistics for those that are keeping score, drum roll please:

138,237 feet of track, or 26.18 miles! 9,151 new for 2008!

Please take the time to read the article about the Friends

of Train Mountain *conservation area* and some of the projects and issues regarding this very important topic. Train Mountain is not just about having the most track, it is about the dream of being the best experience one can have while riding on a miniature train. That is what this agreement is all about. Please read.

If laying several miles of new track were not enough to keep us all busy, we are also only a short time away from the 2009 Train Mountain Triennial International Meet, June 15-28, 2009. Jerry Crane has his committee chairpersons lined up and will handle the volunteer management for the meet itself. This will be the first call for vendors for the meet. If you would like to be a vendor please contact: Russ Wood, P.O. 927 Chiloquin, OR 97624 or: russ@hobby-tronics.com subject: Train Mountain Meet.

The vendor area has space for 40 booths. We already have a few vendors signed up, but there is room for many more. Remember we draw participants from around the world and the follow-up publicity continues on for a long time after the meet is over. If you have a product or a service that appeals to model railroaders, then this is your opportunity to let them touch it, see it, feel it, smell it, or whatever. Also remember that this is a 7 1/2 inch gauge meet. But MANY of our members also model in many other scales! If you are not a vendor but know of one that could benefit from the exposure, please pass on a copy of this Gazette and fill them in on what Train Mountain is all about.

This month we have a new column dedicated to the G Scale railroad being built at Train Mountain. Please read their article and check out the pictures of some of the work accomplished so far.

The Company Store is alive and well and has had a good holiday season. To get ready for the 2009 season, they are clearing out some leftover goodies and having a **SALE! A 20% OFF SALE!** on almost all the items in the store. Track items, pedal cars, and some baby items are **excluded** from this sale, but everything else is on sale! **20% off!** This sale is for members only. To get the special prices you need to use the special sale code when you make your purchases online. The sale code to use is **NEWYEAR**, make sure to use all caps and no spaces. You can also call the store direct to place your orders. Also if you happen to be in the area, they even have some items at even more reduced prices. The Company Store is not just here for you to enjoy, it is here to generate some serious income for Train Mountain. **PLEASE** support the store by buying your train related goodies from them. They have t-shirts,

(Continued on page 2)

mugs, novelties, pins, and all kinds of really neat stuff! And right now it's **20% off!** Cool!

To contact The Mountain Gazette:
Gazette@trainmountain.org or
The Mountain Gazette,
P.O. 927, Chiloquin, OR 97624
Russ Wood, Editor

Contributors:

Ross Perrin - General Manager Train Mountain
Linda Wood - For the Ladies Special Project
Kay Perrin - The Tender Half
Dennis & Mort Ediger - G Scale News
Photos - Russ Wood, Kay Perrin
Production - Alma Weber, Peg Schubert

Table of Contents

From The Manager 2
For the Ladies..... 2
The Tender Half 3
It's More Than Just Track 3
G Scale News 4
Photo Gallery..... 4

FROM THE MANAGER
The latest information - Ross Perrin

Well this is it, the year we have worked toward and waited for with great expectation! It is Triennial time! While we had a number of setbacks and a few great advances we survived and we are ready to go. Work has started in planning and we are acting on suggestions and known past practices to make the Triennial the best ever. Jerry Crane is again in charge, and, with his experience, we will have a great event for sure. Russ Wood is in charge of the vendors and printed handout programs, so if you need vendor space or you want to place an ad in the program please contact Russ. There is a big hole left to fill and that is all the jobs Quentin did planning for this event. Most things are going well, but I will be asking for assistance with some things as time goes on. Right now, I need to find out who did the planning for the south end of the ramble. Lindsay McDonnell is working out the north ramble schedule but I am lacking the south half. Please help me out and let me know what you know about this.

We have a new track adoption this month; Joe Mayer has offered to maintain the Licensed Track across Timberlake Railroad. Thanks Joe. I know he will need some help, so please contact him (Joe.Mayer@pgn.com) to volunteer.

Track adoptions have been pretty quiet lately. I know you are on top of that as always but I just want to hear more about what you're doing so I can brag about you.

The weather is good and hopefully we will get the spreader moved in soon. As the weather turned into winter, I understand the permits were removed by ODOT because of bad road condition. So, guess what, Chris Arsenault, the mover has to redo the permits and wait for them again. Always a fly in the ointment, but that rotary sure looks majestic sitting in its place on Train Mountain. We have a year to get this all paid for, and I know that times are tough, but we still

need your donations -- any amount helps. I am sure you will agree, especially when you see the rotary, that it is money well spent. The fact that you are a part of saving this amazing piece of history is very rewarding. Again, "thank you" to all that have helped out and especially Steve and Pam Panzik and Russ Wood for all their efforts.

Out in the Hall of Flags we are making some changes. Steve and Pam Panzik have acquired a bunch of really nice display cases and Dennis and Mort Ediger also brought us a couple of display cases. Dennis and Mort have been bringing down artifacts for some time and Steve and Pam have a very impressive collection they want to share with us that will hopefully be put together by your next visit. One of these cases will be used for some of Quentin's treasures as well. Great stuff going on.

The Company Store is growing by leaps and bounds. Keep an eye on the website for special sales and updates. We need your support to continue on with this railroading dream and the store is one way you can help support the Mountain. It has good products and good prices on everything from RR pins to baby clothes with trains on them. Everything is train related, so when you need those perfect train gifts, look at the Company Store.

Out on the railroad there is a lot of idle snow equipment with no snow to plow, but the trains are still running hauling track panels out. Lee Breuer has been keeping the track shop clear and moving loads to the main yard for delivery out to the railhead when needed. Thanks Lee!

I was a bit skeptical when Joanne Breuer (Lee's wife) left him behind again but Lee has been so busy we never see him. He has been building train cars, building milepost signs, helping Ron out in the shop on buildings and doing all the odd jobs we needed done. Jerry Balf has been doing so many things, including handyman work around the place; I can't keep up with him. Thanks Jerry. Larry Dabroi has been working on his buildings down on Sannich Siding and Russ Wood and Burt Newberry have been fixing and upgrading the snow removal equipment.

This month the "Good Guy Award" once again goes to a couple. Quentin always thanked the wives for letting the guys come and work on the railroad and very properly so. But in some cases the wives not only let the guys come and work but they join in as well. This month the "Good Guys" are Peg and Charlie Bill Schubert. For many years now Charlie Bill has been coming to work here at the Mountain and making things work, everything from track work to building parts and fixing equipment. Most times Peg came as well (someone had to bring him lunch-HAHA) and pitched in on the track, in the shop, out raking and helping in the office or kitchen. This is what makes it all work. Thank you guys, we appreciate you more than you will ever know.

I have some sad news to tell you. This week I became aware that long time member and supporter Al Jones passed away on Friday the 9th of January, 2009. I think Al has left his mark on the hobby; especially on Klamath and Western and Train Mountain Railroads and what a positive mark it is. Such things as the Jones Tunnel have become a

(Continued on page 3)

favorite for all to run through. His work in designing the original Over The Hill project and his exchange of ideas at Train Mountain have definitely helped form what we enjoy today. I don't know a lot about Al but I will miss him around the track. Services for Al will be on the 24th of January at 11:00 AM in Springfield, Oregon. Further details are available from Marty at 1-541-335-9174. Our thoughts go out to Marty (Al's wife) in this time of loss.

Talk to you soon:

Ross Perrin, (GM)- tmrrgm@trainmountain.org

FOR THE LADIES

2009 Quilting Project - Linda Wood

After receiving many inquiries on how to do the special blocks for the 'Keeping the Dream' quilt here are a few pointers to help you along. First the process is really very simple, all you need is the picture, a computer printer, and some special paper. The paper can be bought at any paper products store that carries computer paper. Stores like Staples, Office Depot, Office Max etc. The paper is made by companies like Avery Labels #3275. Its sometimes called T-Shirt transfer paper. You print the picture on the paper and then iron it on the fabric. The easiest fabric to use is muslin. The only real trick to the whole process is to make sure you 'reverse or flip' the picture BEFORE you print it. If you don't reverse the picture, it will iron on to the fabric backwards or reversed. Other than that, it's a real simple process. Remember the fabric needs to be 12 1/2 inches square and the idea is to feature Quentin and YOU at Train Mountain. The picture can be of your train or you or whatever AND of course Quentin. The theme of the quilt is 'Keeping the Dream'. If you don't want to mess with any of this process just email your picture to russ@hobby-tronics.com and if you do make a block send it to: Linda Wood, P.O. 927, Chiloquin OR 97624. Thanks for your help.

THE TENDER HALF

More items for the tender half - Kay Perrin

Happy New Year Everyone!

I personally have a query I would like help with. There is a young man who works in the area whose father loves trains. He would very much like to give him a special train experience. He saw a TV program once about a place where people can actually run a full size train. If anyone would know where that is....I'm guessing it would be one of you. If you have any knowledge or thoughts about such a place, please let me know. I'm sure others would be interested as well.

During the holiday season I noticed what a vast variety of train Christmas cards there are. I'm sure others would be interested in knowing where everyone found them. Ours came from a Miles Kimball catalog.

We have a newer member; Patt Poklemba who has been keeping her eyes out for train related items. She passed along a great place for items to decorate a child's bedroom (I suppose it wouldn't have to be for a child) in

trains. They have bedding, rugs, curtains and some very clever storage bins. The website is www.thecompanystore.com and then search "railroad".

Pam Shilling and I have been chatting back and forth about train wallpaper and borders...neither of us being very successful finding anything that is still available. Anyone know the secret? We're open to suggestion. There are also people that would very much like to know where the "cool" train material comes from. Please share....even if you think everyone already knows....trust me...some of us don't.

Pam also sent me a picture of the centerpieces she made for their Redwood Empire Live Steamers' Christmas dinner. I literally had to beg her to let me share it with you....but I'm sure you'll agree that they are beautiful. All she started with were the Train bags from our store.



The second picture is from Train Mountain's New Year's party. Marg Hope and Jeanne Black collaborated to make an entire train cake. They used a pan that is made by Nordic Ware as the base and then decorated it with all the candies they could find in Klamath Falls.



Believe me....it was priceless. Marg shared that it was remarkably easy to follow the directions and that there were suggestions for decorating. However, I'm pretty sure these ladies let their creative spirits run wild. Well, now we know that Nordic Ware makes an engine and a train... anyone know who makes a caboose pan?

Thank you to everyone who has shared. I really appreciate it and so do your Train Mountain friends. I've tossed out several questions, so I hope to get lots of replies; store@trainmountain.org

Kay

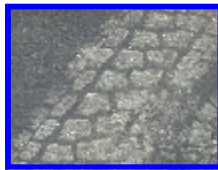
IT'S NOT JUST TRACK

The FTM Conservation Area - Russ Wood

There has been lots of conversations about what all the different Train Mountain agreements mean. The agreements I'm talking about are those between Train Mountain, Timberlake Railroad, and the Friends of Train Mountain (FTM). The most familiar agreements are those regarding the usage of the track or right of way itself. But there are also agreements regarding the 'look and feel' of the right of way. This will be the focus of this article. The look and feel agreement is part of a conservation plan that FTM has with Train Mountain. The agreement restricts construction of items that may detract from the train riding experience in certain areas of the Train Mountain property. This includes things like containers, out buildings, etc. It also makes provisions for some restoration

(Continued on page 4)

of the lands that the new track will cover. Over the years, the property has had access roads and trails crisscrossing the area. The agreement calls for removing many of these scars and replanting and reseeding the area. What this means for the members of Train Mountain is that we will get to see some Oregon forest land at it's best on our train rides. It also means that we have a very special responsibility to MAINTAIN those areas that get the FTM treatment. That means NO gators, no driving your vehicle, limited walking or hiking, or put simply 'keep off the grass!' The area will end up looking like a park, but it will take a couple of years to re-grow. It will end up being another unique aspect of the Train Mountain experience. However, it will only get that way if we all participate in the idea of conservation and restoration. If an area 'looks' like it's under repair, please don't climb over the barricades, don't drive around them, don't move them so you can get by! As if our normal use of wheeled vehicles was not enough trouble, right after the brand new plastic was laid going up the hill, a member 'sightseer' just had to take a look see, in their big old pickup. How do we know? Check out this picture of the telltale tire marks on the brand new plastic! Come on folks, let's use a little common sense. Stay on your train, don't litter. If you see some litter - **PICK IT UP!** I love the idea of the conservation area and I hope you do too! Let's make it happen! Thanks FTM.



G SCALE NEWS

The Midway Garden Railroad

Dennis & Mort Ediger



Some of you may not know that there is a major railroad project underway at Train Mountain and I'm not talking about the expansion to the north. I'm talking about the G Scale railroad that is being built in the center of Midway Circle. Some tunnels, bridges, a lake, a waterfall, a stream, and some track are already in place. The area has always been reserved for this purpose, and, over the years, some members have started to work in the area but never continued. This time however the project is proceeding 'full steam ahead!' What we need the most on this project, besides your support, is donations of G Scale 'stuff!' We need track, switches, buildings and stuff. In the past, we have been given all kinds of goodies. Occasionally, if we discovered that we couldn't use the donated item, we were able to liquidate the item for cash and were able to purchase some items we could use. The bottom line, please donate, we will make good use of your donation. So please join in on this fun project and make it happen! Thank you.

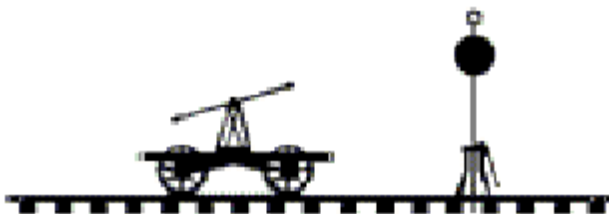


Photo Gallery



This structure is the main building at the Midway Garden Railroad located at Midway Circle. The railroad is going to be a very large G scale railroad (the worlds biggest?).



There are other structures located at the Midway Garden Railroad but they are just a bit smaller!



This is one of the bridges already installed at Midway. And yes there is track on the bridge and it does run.



I've included the picture to the right just for those of you that don't know what the



term 'frost heave' means to the track at Train Mountain.

The track dudes have been very busy this winter as this stock pile located in Main Yard shows.

Event	Work Week	Train Meet
Polar Bear Meet 2009	Cancelled	Cancelled Cancelled
Narrow Gauge Meet 2009	No Work Week	Fri, May 1- Sun May 3
May Meet 2009	Sat, May 23 Thu, May 28	Fri, May 29- Sun, May 31
Triennial 2009	Mon, Jun 15 Sun, Jun 21	Mon, Jun 22 - Sun, Jun 28
Operations Meet 2009	Sat, Jul 25 Thu, Jul 30	Fri, Jul 31- Sun, Aug 2
September Meet 2009	Sat, Sep 5 Thu, Sep 10	Fri, Sep 11- Sun, Sep 13
Fall Colors Meet 2009	No Work Week	Fri, Oct 2- Sun, Oct 4



Always Open! That's the online TM Company Store. Lots of great goodies that will be sure to delight the railroaders in your family.

store@trainmountain.org
541-783-3036

SALE - SALE - SALE - SALE - SALE - SALE - SALE
SALE - SALE - SALE - SALE - SALE - SALE - SALE
SALE - SALE - SALE - SALE - SALE - SALE - SALE

The Train Mountain Company Store is having a **sale!** We need to get ready for the 2009 season and of course the upcoming 2009 Triennial. We have videos, t-shirts, mugs, and so much more! Please go to the Company Store on the Train Mountain web site. Check out all of the great merchandise that is available for you, the members. See the article in this issue on how to get the Member Only sale prices!

20% Off!

Special Note: Some merchandise may be excluded from this sale. Please read the Store article for more information. Thanks.



Announcing a Steam Profile

1 1/2 Inch Scale 2-6-0 Mogul

Turn the knob and Go for a ride.

Includes sound, smoke, **batteries**, charger, and more

You just add the fun!

These engines are made in the USA and ship from stock—NO WAITING! I've taken six adults out to M&M twice on Saturday and Sunday, all on the same charge! Very reliable, very strong, and with the **smoke**, **sound** and great looks, it really is a lot of fun!

Locomotive is 24 VDC **battery** powered for safe, efficient and reliable operation. The locomotive features include: 4 motors, **batteries**, charger, smoke, sound, powder coat paint, & great details! Sales agent:

russ@hobby-tronics.com

Russ Wood @ 541-783-3879



Looking for a very special gift for that little one in your life?

Try an exciting **Pedal train**

They are available from the **Company Store**
store@trainmountain.org **1-541-783-3036**

